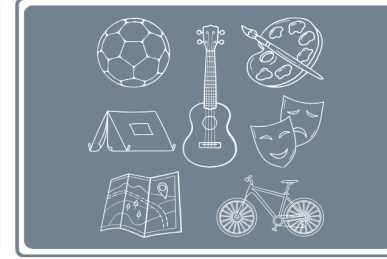


UNDER-SERVED STUDENT CHARTER



QUALITY FIRST TEACHING	ACADEMIC MENTORING AND SUPPORT	CAREERS GUIDANCE	EXPERIENCES AND ENRICHMENT	ATTENDANCE AND PROGRESS
<p>In the classroom we will:</p>	<p>Each student will benefit from a personalised academic/pastoral mentor who will work to ensure:</p>	<p>Each student will have access to the best possible career guidance and as a minimum will:</p>	<p>Each student will have memorable experiences that will support engagement and grow independence through:</p>	<p>Each student will be supported to ensure that attendance and achievement in line with their peers through:</p>
<p>Ensure that all staff know who their under-served students are.</p> <p>Consistently use the elements of RICE (our Newman principles of instruction) to ensure excellent learning for all.</p> <p>Use targeted questions for under-served students to check for understanding. Each student is asked a question during a lesson.</p> <p>Prioritise checking that students have the support they need in lessons, including relevant resources.</p> <p>Ensure that under-served students are given priority for feedback and given lots of opportunities to develop oracy and literacy skills.</p>	<p>That they identify the needs and target the right personalised help and support to succeed.</p> <p>Pupils are given priority for feedback and RICE opportunities in the lesson.</p> <p>At least three 1:1 interviews take place each year with an Academic/pastoral Tutor or Mentor.</p> <p>Parents/carers are kept informed and actively encouraged to attend at least one face to face consultation about their child's progress a year.</p> <p>Are prioritised for interventions, such as revision skills and tutoring etc..</p>	<p>Engage in career-related learning (CRL) and IntoUniversity program from Years 7-13.</p> <p>Participate in Futures Fairs (Y9 & Y10), alumni events (Y9), and mock assessment centre workshops (Y10).</p> <p>Access independent careers guidance (ICG) at KS3 (lunchtime drop-ins/referrals) and at least one high-quality ICG interview at KS4, with follow-up if needed.</p> <p>Benefit from 5+ career-related encounters via careers/PSHE sessions and curriculum learning.</p> <p>Engage in workplace experiences through curriculum visits.</p> <p>Complete 1-day work experience in Y10 and 5 days in Y12 (online or face-to-face).</p>	<p>Positivity and praise, their achievements are noticed, and caritas coins are awarded.</p> <p>Attending at least three off-site experiences trips or visits in their school lifetime.</p> <p>Experiencing a residential trip</p> <p>Free access to music tuition or other specialist tuition.</p> <p>Free access and resources for all school clubs</p> <p>Access to wider opportunities, such as our LOFT and our school alternative curriculum offer.</p>	<p>Access to appropriate, targeted and meaningful additional support to ensure progress in line with their peers in English and maths.</p> <p>Close monitoring and early help or support to remove any barriers to poor attendance.</p> <p>Individual support and assistance to remove the barriers to success such as help with homework and personal study.</p> <p>Careful timetable adaptations when required, including supportive measures, such as LOFT, Pastoral support and alternative curriculum options.</p> <p>Support with uniform.</p>